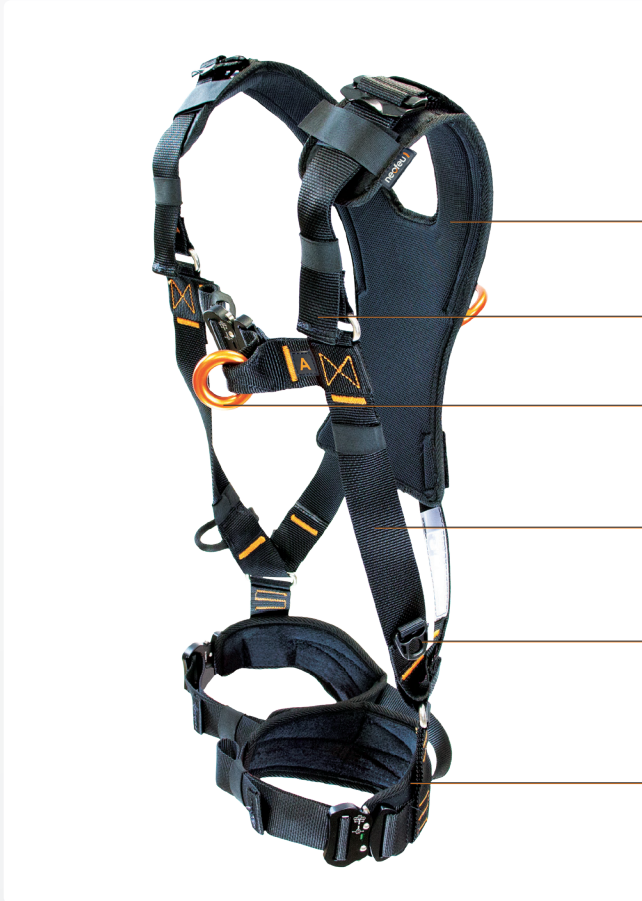


CERTIFICATION : EN 361 : 2002 / EN 1497 : 2007 / REGULATION : 2016 / 425

TESTED  
140 KGErgonomic and  
high density back padShoulder straps adjustment  
pulling downwards

Aluminum front O ring

Water repellent webbing  
with fall indicator

Tool holders

Padded leg straps with  
adjustment through  
automatic bucklesOrange coated back  
D ringAutomatic aluminum buc-  
kles with locking indicator

Activated fall indicator

Water repellent  
webbing

## TECHNICAL SPECIFICATIONS

- Tested to 140 kg
  - Water repellent webbing in polyester 44 mm (R<sub>z</sub>25 kN)
  - Shoulder straps adjustment pulling downwards with steel black epoxy coated quick buckles male/female
  - Chest strap 44 mm with automatic front buckle
  - Drop indicator showing at 300 daN
  - Comfort pads on legs
  - Static resistance ≥ 15 kN
  - Weight : 1,2 kg
- Standard models :
- Without back pad Réf. NUS77A
  - With back pad Réf NUS77AP

Other models available on request :

- Back extension strap of 300 mm Réf. NUS77AEX
- Back pad + back extension strap Réf. NUS77AEXP

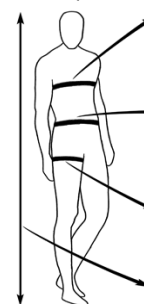
## USE

Full body harness to use in case of fall hazard. Intended to maintenance works in industry and the construction area.

## DESCRIPTION

Full body harness VIT'O comfortable lightweight and safe, fits most of the bodies thanks to its high performance adjusting and locking systems.

### TAILLE / SIZE



80 cm ≤ Size S ≤ 105 cm  
90 cm ≤ Size M-L ≤ 115 cm  
100 cm ≤ Size XL ≤ 135 cm

65 cm ≤ Size S ≤ 105 cm  
85 cm ≤ Size M-L ≤ 120 cm  
105 cm ≤ Size XL ≤ 135 cm

45 cm ≤ Size S ≤ 65 cm  
50 cm ≤ Size M-L ≤ 75 cm  
60 cm ≤ Size XL ≤ 80 cm

155 cm ≤ Size S ≤ 175 cm  
165 cm ≤ Size M-L ≤ 188 cm  
170 cm ≤ Size XL ≤ 200 cm